

# Better AMI Performance



**FDE** FUJIDHARMA  
ELECTRIC

Office and Factory :  
Jalan Rawagelam I/10  
Jakarta Industrial Estate Pulogadung  
Jakarta 13930 - Indonesia  
Ph / Fax : +6221-4600143 / 4610338  
email : admin@fujidharma.co.id



## CHS160

Single Phase Smart Meter

- ⊗ Ultra Anti-Tamper
- ⊗ Large LCD Display
- ⊗ Advanced AMI Application



RELAY



MULTI-COMMUNICATION



LARGE LCD DISPLAY



AMI

## SPECIFICATIONS

# CHS160

Single Phase Smart Meter

### Measurement

- Compliance with IEC standard
- Element: 1P2W,1P3W
- Accuracy: Class 1.0 for active, Class 2.0 for reactive

### Voltage

- Nominal voltage (Un): 230V
- Operating range: 0.7Un ~ 1.2Un
- Power consumption: ≤1.5W, 0.5VA

### Current

- 5(60)A

### Frequency

- 50Hz

### Real-time Clock

- Accuracy within 0.5 seconds per day at 23°C

### LCD Display

- 7 characters of 7 segment display
- Digital size: 5.8mm × 13mm
- LCD display with power failure
- With backlight

### Battery (Optional)

- Built-in battery
- Voltage: 3.6V
- Backup time: 15 years with power

### Measured Values

- Import/Export/Absolute/Algebraic kWh
- Import/Export/ kvarh
- Instantaneous kW, kvar, kVA, Irms, Vrms, Frequency, Power factor

### Maximum Demand

- Maximum demand: kW, kvar
- Support interval and sliding demand type
- Intervals programmable from 5 to 60 minutes

### Time of Use

- Up to 2 rates (default)
- Up to 12 seasons each year
- Up to 12 week table
- Up to 8 day table and 10 time interval in a day

### Relay (Optional)

- One relay / 100A

### Event Logs

- Tamper detection
- Configurable event alarming system
- Meter error state indication on LCD

### Load Profile (Optional)

- Up to 2 channels
- Over 11520 records per channel

### Communications

- Optical port
- Built-in LoRa/RF/Bluetooth module (optional)

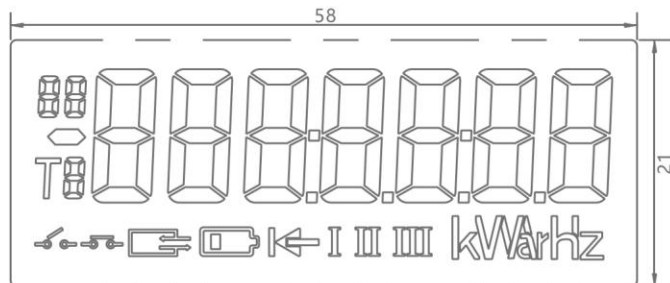
### Environmental

- Operating range limit: -40°C to +75°C
- Storage range limit: -40°C to +85°C
- Relative humidity: ≤95% RH
- Ingress protection: IP54

### Dimensions and weight

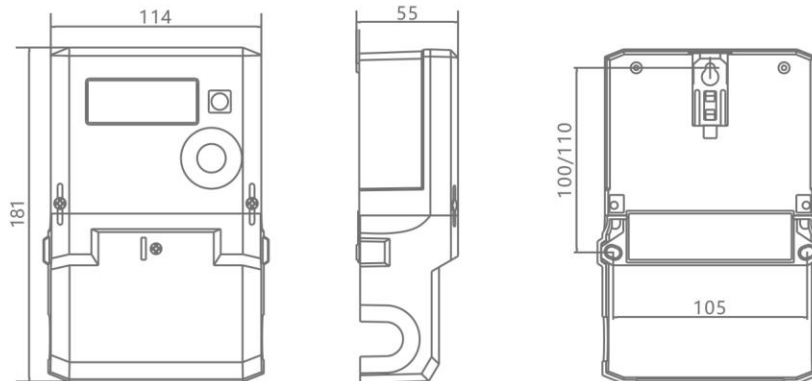
- Dimensions: 181mm × 114mm × 55mm
- Weight: 1.0 kg (Approx.)

## LCD INDICATION



Units:mm

## METER DIMENSIONS



Units:mm

## PT. FUJI DHARMA ELECTRIC

Factory & Marketing office :

Jl. Rawagelam I/10 - Kawasan Industri Pulogadung Jakarta 13930 - Indonesia

Phone : (62-21) 4600143 (Hunting), Fax : (62-21) 4610338

e-mail : admin@fujidharma.co.id;